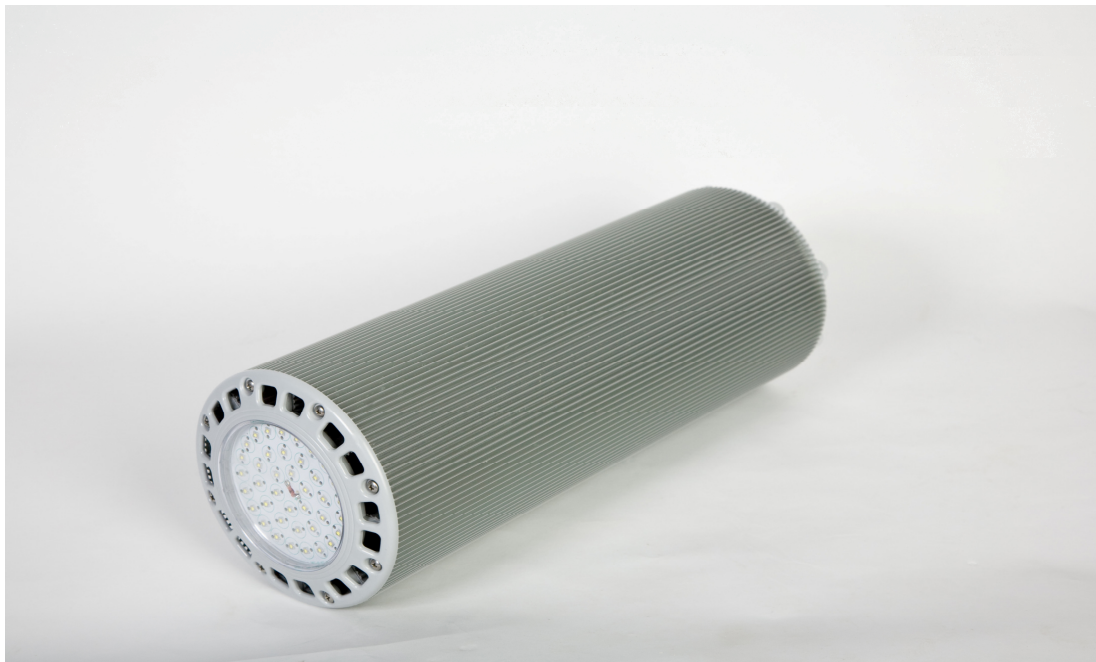


**Industrial LED-lighting: KOL-series of Focus Lightco.**



**Applications**

The KOL-series is a powerful LED lighting for production halls. The concentrated rays of this bell luminaire is a warranty for a perfect lighting of the production process.

**Product Specifications**

<b>product code</b>		<b><u>KOL-80</u></b>	<b><u>KOL-80-D</u></b>	<b><u>KOB-12</u></b>	<b><u>KOB-24</u></b>
article number			to come	to com	to come
Life cycle (min. - presumption)	Hr	100.000			
lightsource		Nichia LED			
light flux	lm	5640 - 8000			
power (LED-module)	Wt	85			
voltage	V	170 - 264			
light colour		neutral white			
colour rendering index (typ.)	Ra	75			
beam angle		120°	60°		
ambient temperature		- 20° to +40°			
protection		65			
housing		aluprofile/polycarbonate glass			

**Packaging (VE)**

Packaging (VE)		box	box	box	box
piece/ VE	pc	1	1	1	1
product dimension	mm	150 x 450			
VE Dimension	mm	460x160x160			
weight VE	kg	4,8			
VE per pallet		84			
min. Order quantity	pc	10			

**Features to your benefit:**

- √ - energy saver
- √ - long lasting = maintenance free
- √ - thermic management
- √ - RoHS conform
- √ - CE
- √ - mechanically strong
- √ - 2 year warranty
- √ - constant light output (CLO)
- √ - stable power